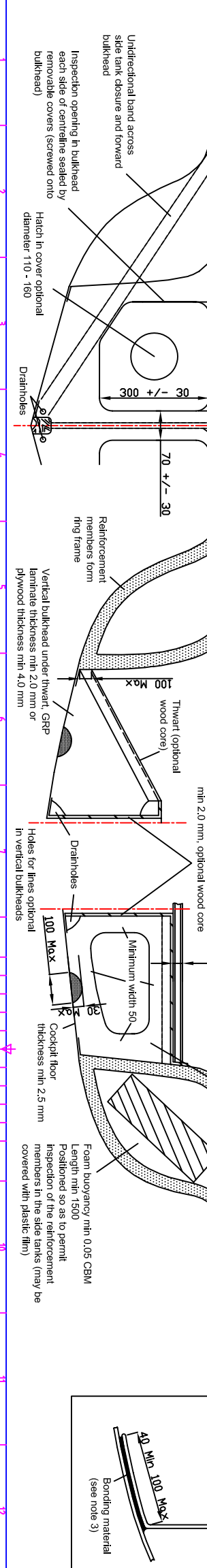


**INTERNATIONAL 470 CLASS**  
**Building Specification Plan**

Designer: Andre Cornu  
 Scale: 1:1  
 All dimensions in mm

ISAF (UK) Ltd.  
 Athlone House,  
 Town Quay,  
 Southampton,  
 Hampshire,  
 SO14 2AQ  
 United Kingdom

Dwg No: 470-003  
 Date: 12/02/2009  
 Drawn by: C Evans BEng (Hons)  
 Sheet: 03



- The bare hull weight, including stem fitting, shroud fittings and traveller bar, if fitted, shall not be less than 86 kg.
- All parts from any one builder shall be built to the same individual specification(s) held by the ISAF. Tests may be conducted by ISAF representatives to establish compliance with this requirement, including material tests on samples taken from boats and a swing test to check weight distribution.